

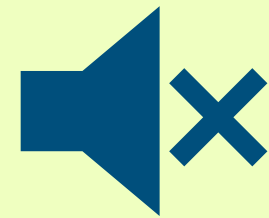


NRP JANUARY 2026 EDUCATION SESSION

A QUICK WORD:



This presentation will be recorded and available on the NRP website



Please keep your lines muted during speaker presentation



You may enter your questions into the chat or come off mute if you have a question

BETTER
together



Welcome

Narrative Leadership: Story of Self

Relational Leadership



LISA RAHANGDALE, MD, MPH
ASSOCIATE DEAN FOR ADMISSIONS
PROFESSOR, DEPT OF OBGYN

ACADEMIC TRAINING

BS, UNC-CHAPEL HILL – BIOLOGY/POLITICAL SCIENCE
MD, UNC-SOM
RESIDENCY, NORTHWESTERN UNIVERSITY - OBGYN
FELLOWSHIP – REPRODUCTIVE ID – UCSF
MPH, UC-BERKELEY

RESEARCH INTERESTS

REPRODUCTIVE HEALTH OF WOMEN WITH HIV
HPV AND CERVICAL CANCER PREVENTION
MPI FOR UNC BIRCWH – K12 WOMEN'S HEALTH



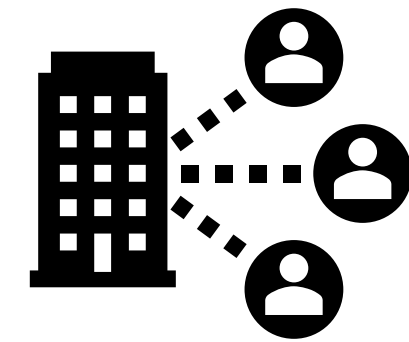
How We

Introduce Ourselves

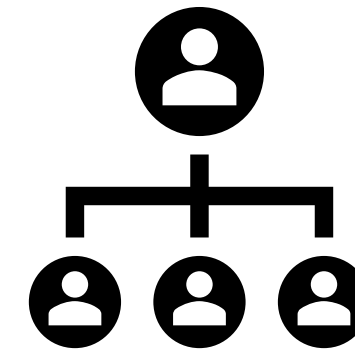
Often when meeting people for the first time, particularly in a work environment we can default to describing ourselves by our resumes.



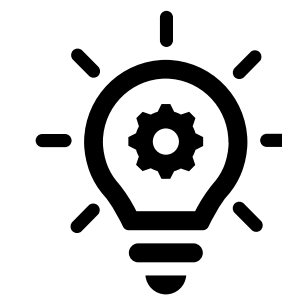
Academics



Work experience



Roles + Position



Expertise

HPV VACCINE
A Shield Against Multiple Cancers

The infographic features a central shield with a green checkmark and the text "HPV Vaccine". Surrounding the shield are four orange circles, each containing an icon and text: "Cervical Cancer" (cervix icon), "Anal Cancer" (anus icon), "Throat / Oropharyngeal Cancer" (head and neck icon), and "Vulvar Cancer" (vulva icon). Below the shield, it states "91%-100% effective" and "Protects against 9 HPV strains (Gardasil-9)". The OncoDaily logo is in the bottom right corner.

HPV Vaccine
91%-100% effective
Protects against 9 HPV strains (Gardasil-9)
OncoDaily

screening preventable **HEALTHCARE** PREVENTION
CERVICAL Women
JANUARY CANCER HEALTH
PREVENTION **AWARENESS MONTH** DISEASE
HOPE Pap test
HPV PREVENTION MONTH **infection** **HEALTH** **MATTERS** Sexual Health
EARLY DETECTION

CERVICAL CANCER IS PREVENTABLE!
HAVE YOU BEEN SCREENED?

The illustration shows a woman with dark hair and a pink shirt holding a pink ribbon. To her right are four circular icons: a uterus, a syringe, a calendar, and a pink ribbon. The text "Jennipher's Health Corner" is at the bottom.

Jennipher's Health Corner

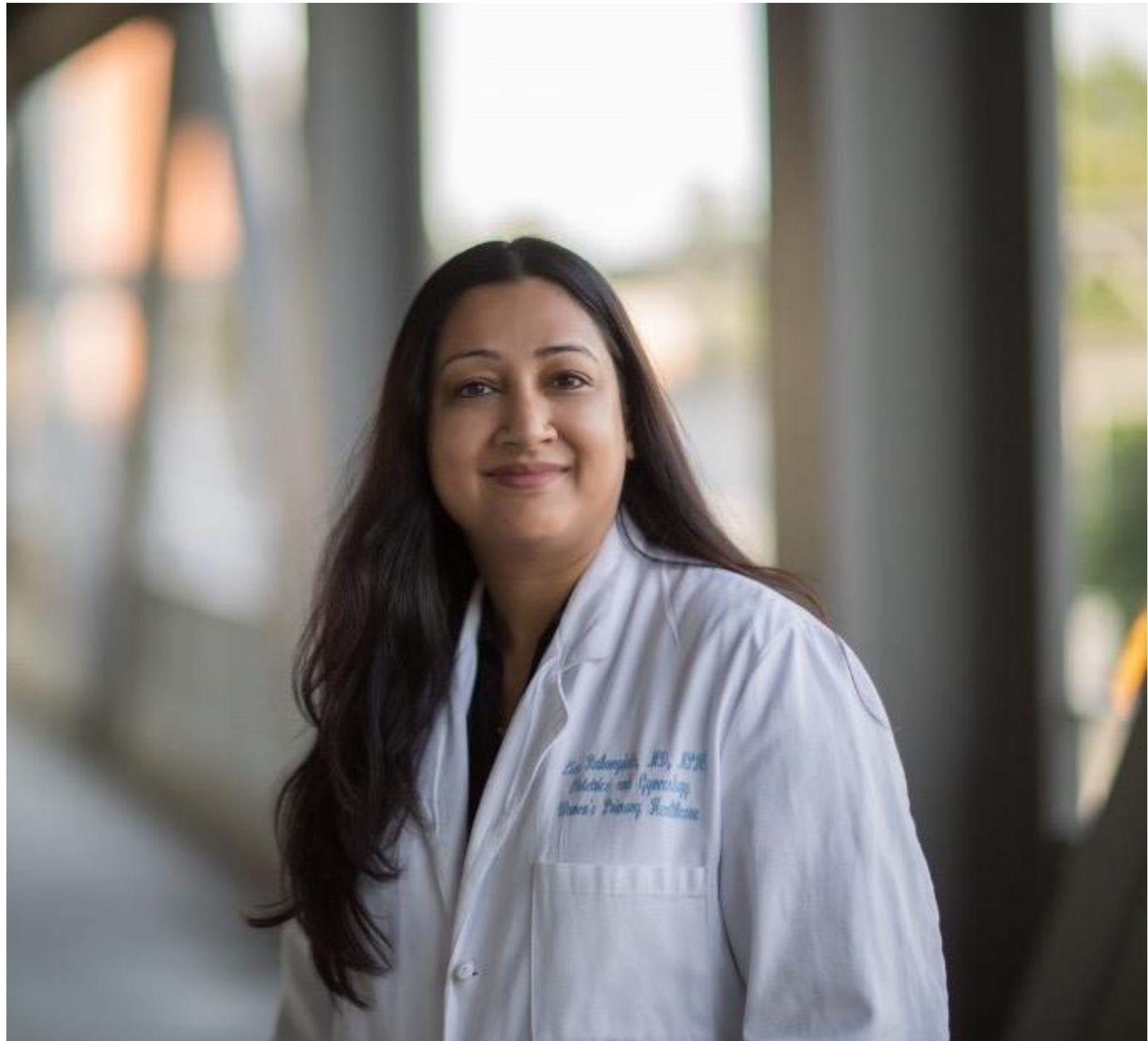
my story

OF SELF





ACADEMIC
TRAINING



vs



WHO I AM
WHAT I CARE ABOUT

narrative
LEADERSHIP



Stories are Powerful

Recover

Restoration and
Healing

Rebuild

First, we listen

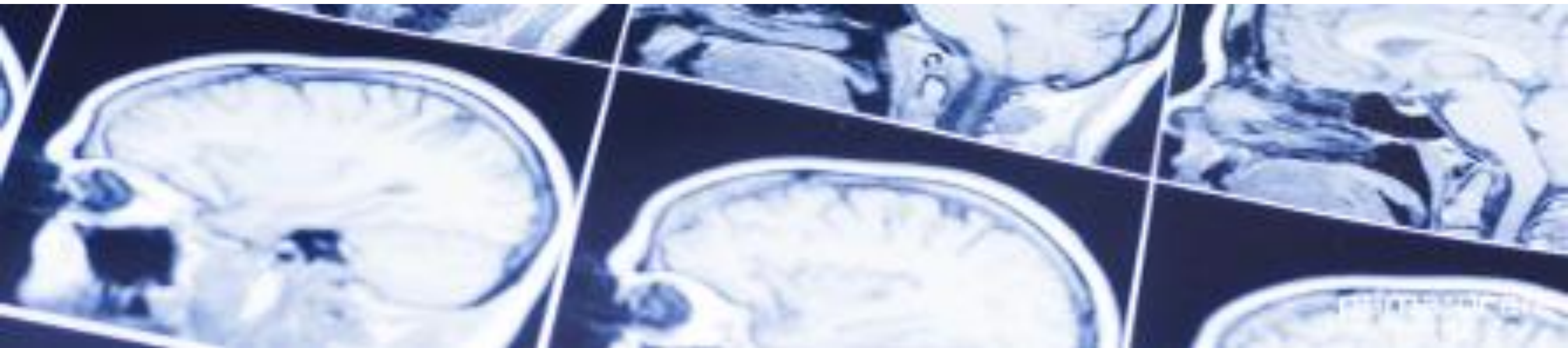
Resilience

Our “why”



...and Grounded in Science

“Shadow activity” in the brain
Increased sense of **community**
Increased **emotional connection** and buy-in

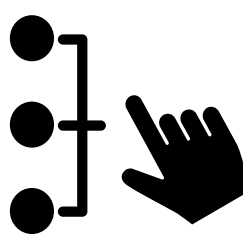


Foundations of Story

The core components of any story follow the same arc.



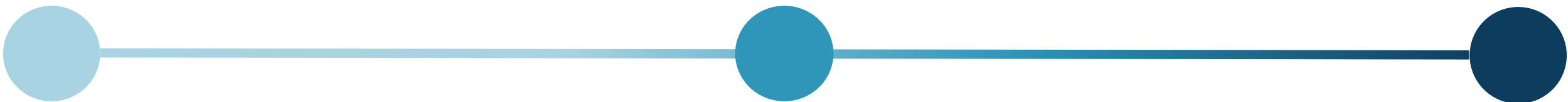
Challenge



Choice



Outcome



Why did you feel it was a challenge? What was so challenging about it? Why was it your challenge?

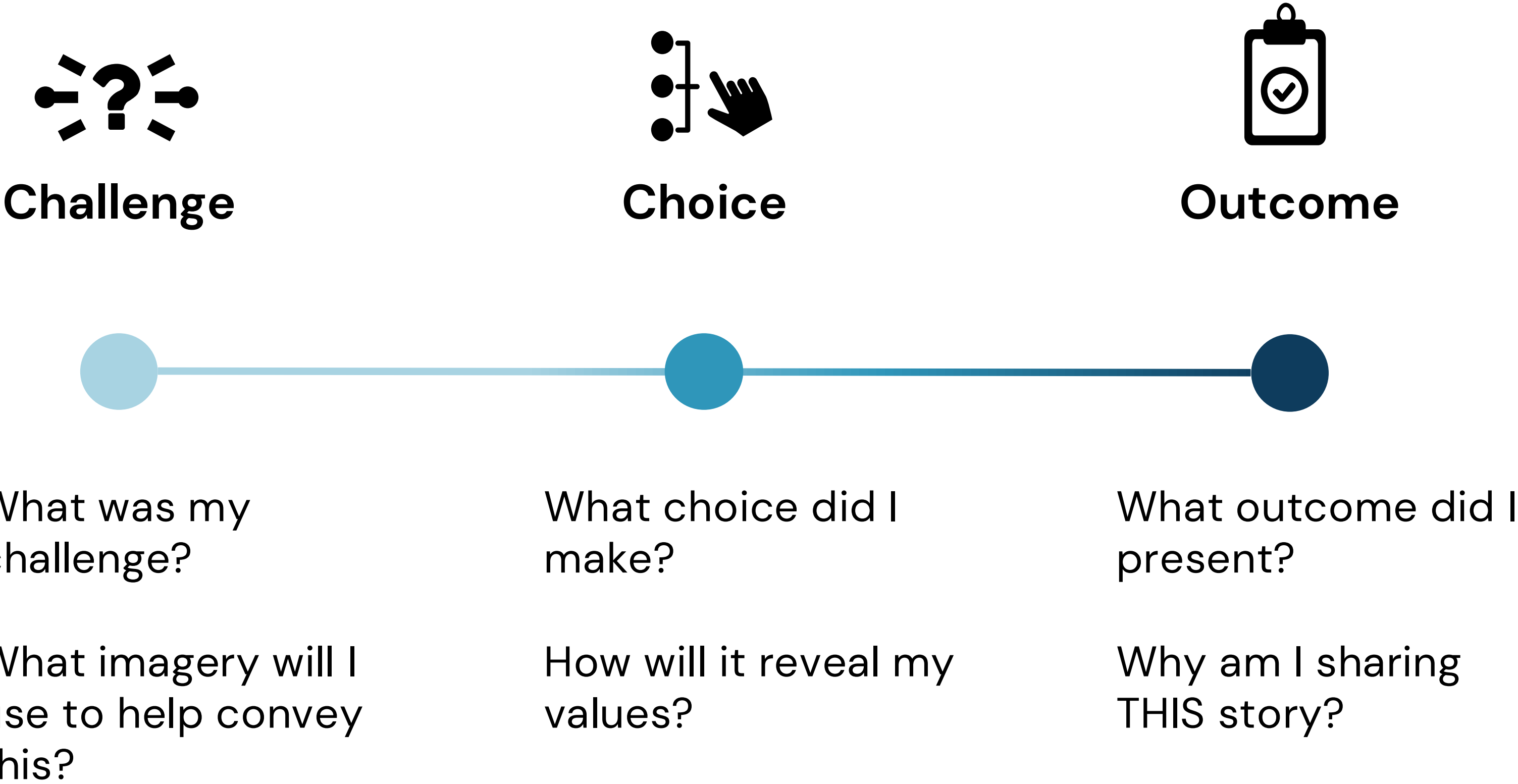
Why did you make the choice you did? Where did you get the courage – or not? Where did you get the hope – or not? How did it feel?

How did the outcome feel? Why did it feel that way? What did it teach you?



Your Story of Self

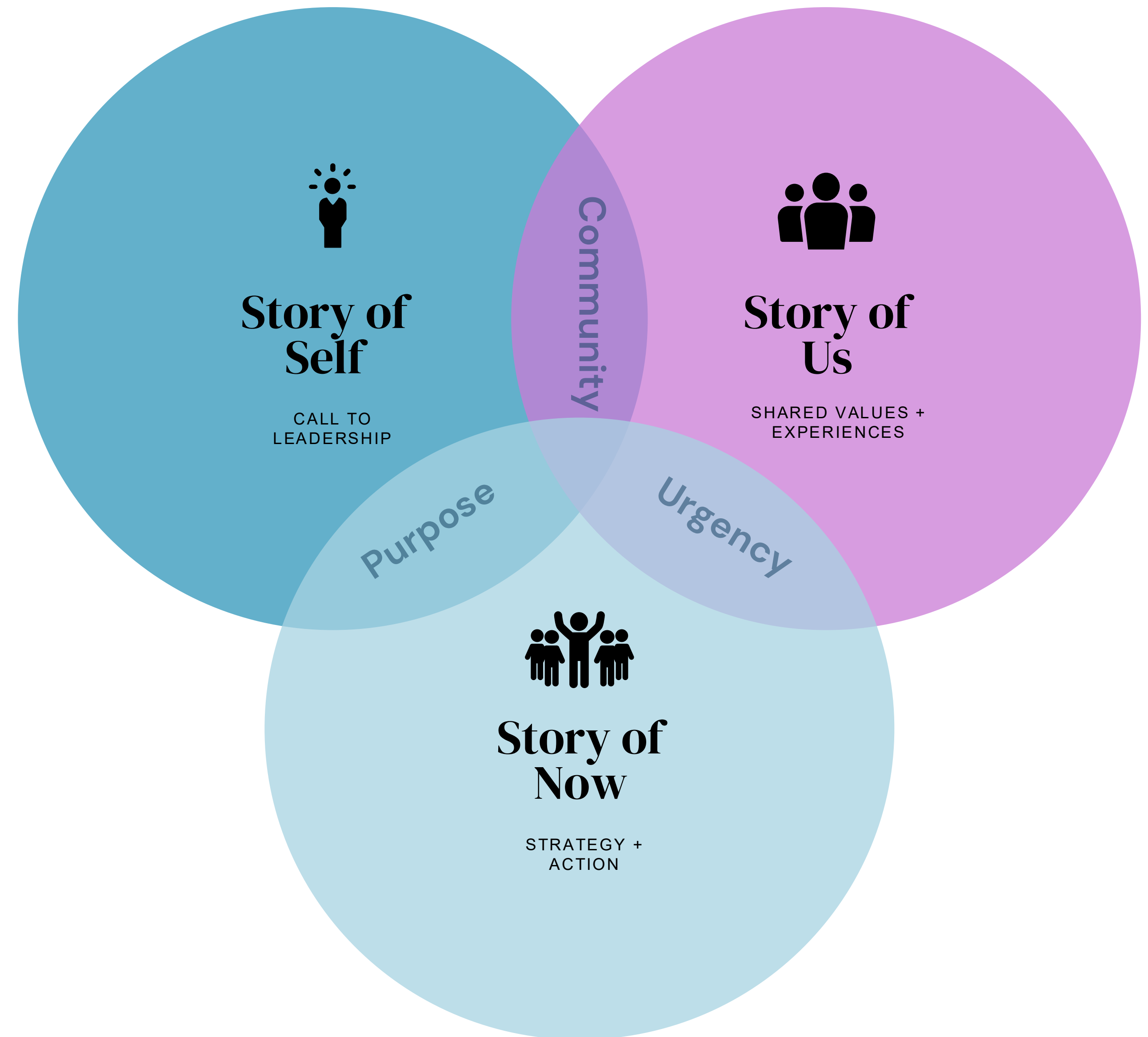
Listen for the key components:



Narrative Leadership

Each aspect of narrative leadership can be told independently or interwoven together.

Marshall Ganz. 2009. What is public narrative: self, us & now (public narrative worksheet). Working paper.



The Power of Connection

Relational Leadership

Reflect

Observe

Connect

Transform

relational
culture

Individual

Team

System

Relational Leadership (RL) is a human-centered approach to working with others that cultivates connection and awareness in order to increase belonging, collaboration, and impact across health systems.





“

**To impact big systems change,
We must focus on
small relational change.**

Reflect



Wrap Up + Takeaways



Program

Agenda



DAY 1

**Relational
Leadership +
Story of Self +
One-to-Ones**

DAY 2

**Relational Culture
+ Positionality +
Power + Feedback**

DAY 3

**Teaming +
Collaborative
+ Conflict:
Diagnosis**

DAY 4

**Difficult
Dialogues +
Transformative
Action + Closure**

Relational Leadership Institute

Spring 2026

March 16th – 17th

March 26th – 27th

Summer 2026

June 1st – 2nd

June 11th – 12th



For more information:
Relational_Leadership@unc.edu

EVALUATION

Post-session evaluation:

Link go.unc.edu/JanNRPEducSurvey
or scan the QR code.

Attendance Certificate: An option to **download** certificate, BEFORE submitting the eval, is located within the post session eval survey.

Email: NRP@unc.edu if further questions or suggestions for future education.

